



25 The Chilterns, Gloucester Green, Oxford, OX1 2DF

NEW CARPET BEING FITTED BEFORE TENANCY STARTS July 2025

Type: Third-floor Self-contained Apartment

Location: Heart of Oxford City Centre, with views over Gloucester Green

Size: Studio flat

Furnishings: Fully furnished

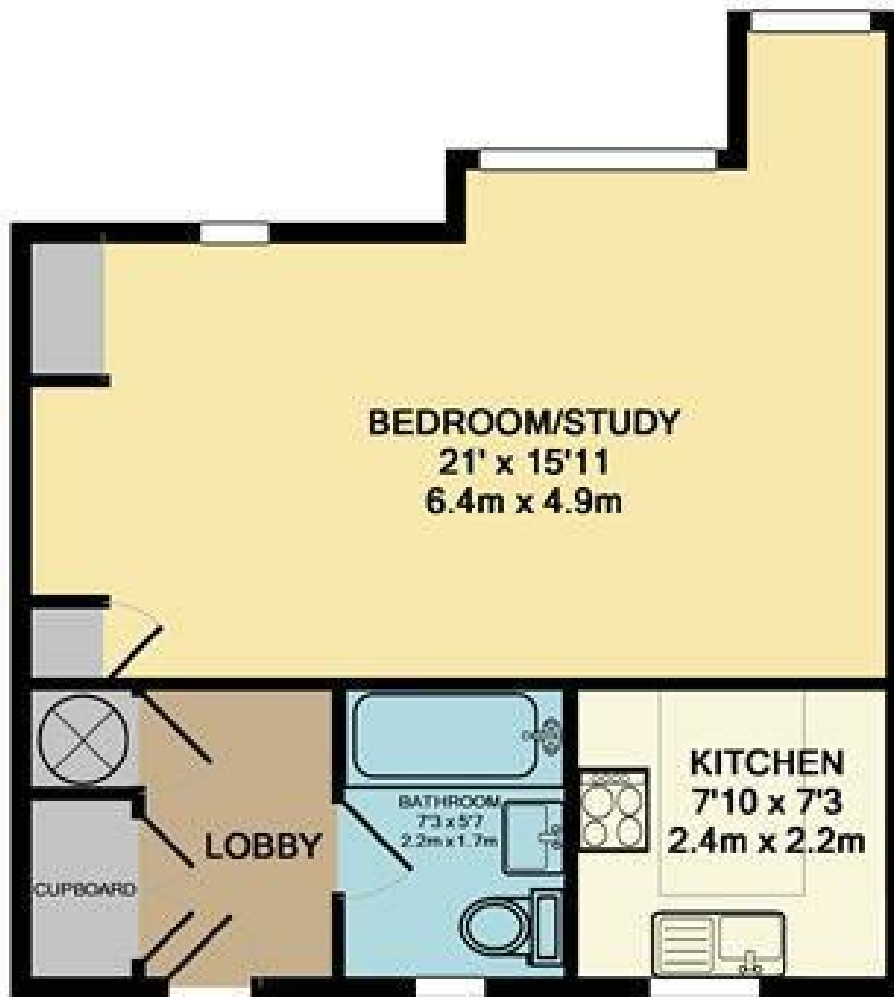
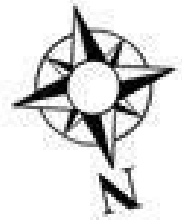
Entrance Hall: Double fitted wardrobes for storage

Living Space: Large studio room with plenty of natural light

Kitchen: Fitted kitchen with washing and drying machines

- 1 Bedroom- Studio Apartment
- Bathroom
- No parking
- Oxford City Centre
- Furnished Property
- Council tax band C

£1,350 PCM



25. THE CHILTERN

TOTAL APPROX. FLOOR AREA 38.2 SQ.M. (412 SQ.FT.)

Whilst every attempt has been made to ensure the accuracy of the floor plan contained here, measurements of doors, windows, rooms and any other items are approximate and no responsibility is taken for any error, omission, or mis-statement. This plan is for illustrative purposes only and should be used as such by any prospective purchaser. The services, systems and appliances shown have not been tested and no guarantee as to their operability or efficiency can be given

Made with Metropix ©2008

Energy Efficiency Rating		Current	Potential
Very energy efficient - lower running costs			
(92 plus) A			
(81-91) B			
(69-80) C			
(55-68) D			
(39-54) E			
(21-38) F			
(1-20) G			
Not energy efficient - higher running costs			
England & Wales		74	74
		EU Directive 2002/91/EC	

Environmental Impact (CO ₂) Rating		Current	Potential
Very environmentally friendly - lower CO ₂ emissions			
(92 plus) A			
(81-91) B			
(69-80) C			
(55-68) D			
(39-54) E			
(21-38) F			
(1-20) G			
Not environmentally friendly - higher CO ₂ emissions			
England & Wales		62	62
		EU Directive 2002/91/EC	